



# Case Study

## PAUA Architects

### Sacred Heart Girls' College



#### Project Overview

PAUA Architects is an award-winning Te Kāhui Whaihangā (NZ Institute of Architects) practice, dedicated to designing remarkable environments that enrich lives every day. With a strong commitment to environmental responsibility and wise resource use, PAUA Architects integrated sustainability into every aspect of the Sacred Heart Girls' College project in Hamilton.




**Architectural Designers:** PAUA Architects

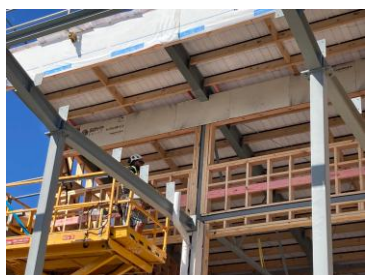
**Client:** Sacred Heart Girls' College

**Project Address:** 52 Clyde Street, Hamilton

**saveBOARD Products Specified:** [betterBRACE Rigid Air Barrier](#)

#### Environmental Impact

-  Recycled Material Saved from Landfill: 3,827.3 kg
-  Greenhouse Gas Emissions Reduction: -2,212.6 kg CO<sub>2</sub>e
-  Total Global Warming Potential (A1–A5): Significantly reduced



## Why the client chose saveBOARD

"In our recent construction project, sustainability was not just a goal – it was a guiding principle. One of the standout decisions was the adoption of betterBRACE by saveBOARD, a product that aligned perfectly with our environmental and operational objectives. Key benefits from choosing saveBOARD were the circular economy, on-site waste recycling, local manufacturing, and a cost-effective solution." — Dominic Yuen, PAUA Architects

## Performance and Functionality

betterBRACE is engineered for New Zealand's demanding conditions:

- Suitable for extra high wind zones
- Excellent bracing capacity
- Moisture and mould resistant
- Durable and long-lasting

## Added Value

saveBOARD supported the construction team with two 1-cubic-meter bags:

- One for betterBRACE off-cuts
- One for soft plastic waste from the site

Both were returned to saveBOARD at no cost, further reducing the environmental footprint and supporting a closed-loop system.



## About saveBOARD

saveBOARD manufactures high-performance building products from 100% recycled composite packaging and soft plastics. With facilities in Hamilton, NZ and Western Sydney, Australia, saveBOARD is committed to building a circular economy in the construction industry.

The product range includes:

- betterBRACE (fibreglass face)
- Paperfaced (recycled paper)
- Exposed, Ceiling Tiles, Multi-use (transparent top surface)

saveBOARD products are sustainable alternatives to plywood, OSB, and plasterboard, and can be used with both timber and steel framing.

